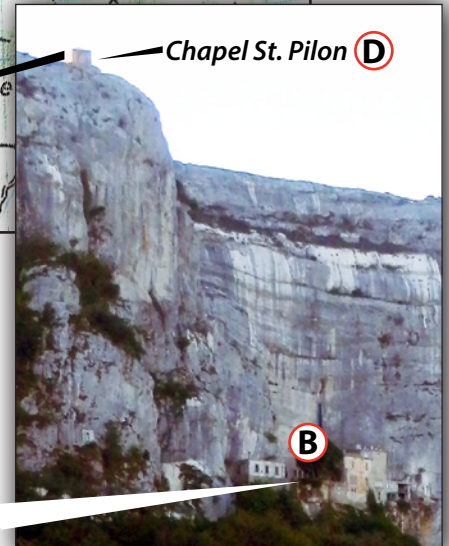
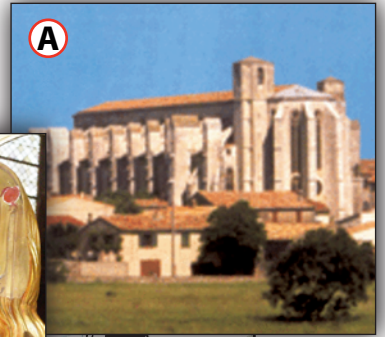
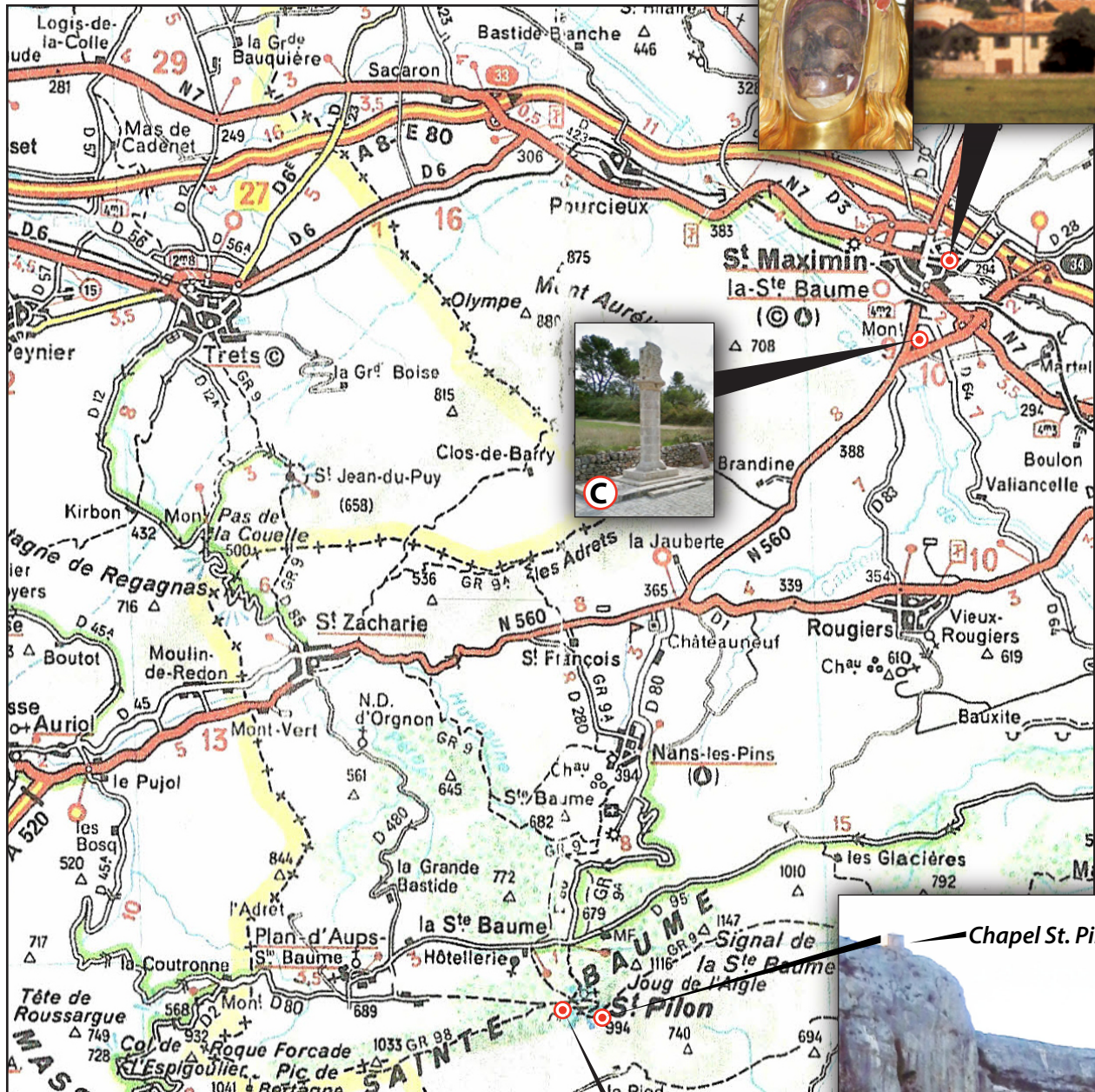


DIRECTIONS

Basilica of Saint Mary Magdalene to La Sainte-Baume

- (A)** *Basilica of Saint Mary Magdalene*—burial place of Saint Mary Magdalene
- (B)** *La Sainte-Baume*—the Cave of Saint Mary Magdalene
- (C)** *The Saint-Pilon*—the meeting place of Saint Maximin & Saint Mary Magdalene
- (D)** *Chapel St. Pilon*—Saint Mary Magdalene was raised up here by angels



When leaving **St. Maximin-la-Sainte-Baume**, at the round-about follow signs toward **St. Zacharie** and N 560. Then turn left onto D 89 toward **Nans-les-Pins** and travel the windy road through the little village of **Nans-les-Pins**, and follow the signs to **Plan d'Aups**. At the end of D 80 turn right and shortly down the road you will see the **Hotellerie-de-la-Sainte-Baume**. You can enter the forest from this point on foot for a 45 minute climb up to **La Sainte-Baume**, the Cave of Saint Mary Magdalene. It is another 25 minute hike to get to **Chapel St. Pilon** on the top of the **Massif-de-la-Sainte-Baume**.

La Sainte-Baume
Cave of
Saint Mary Magdalene